

Montana Teen Driver Education and Training

Module 4.3

Urban Driving



Urban Driving Objectives

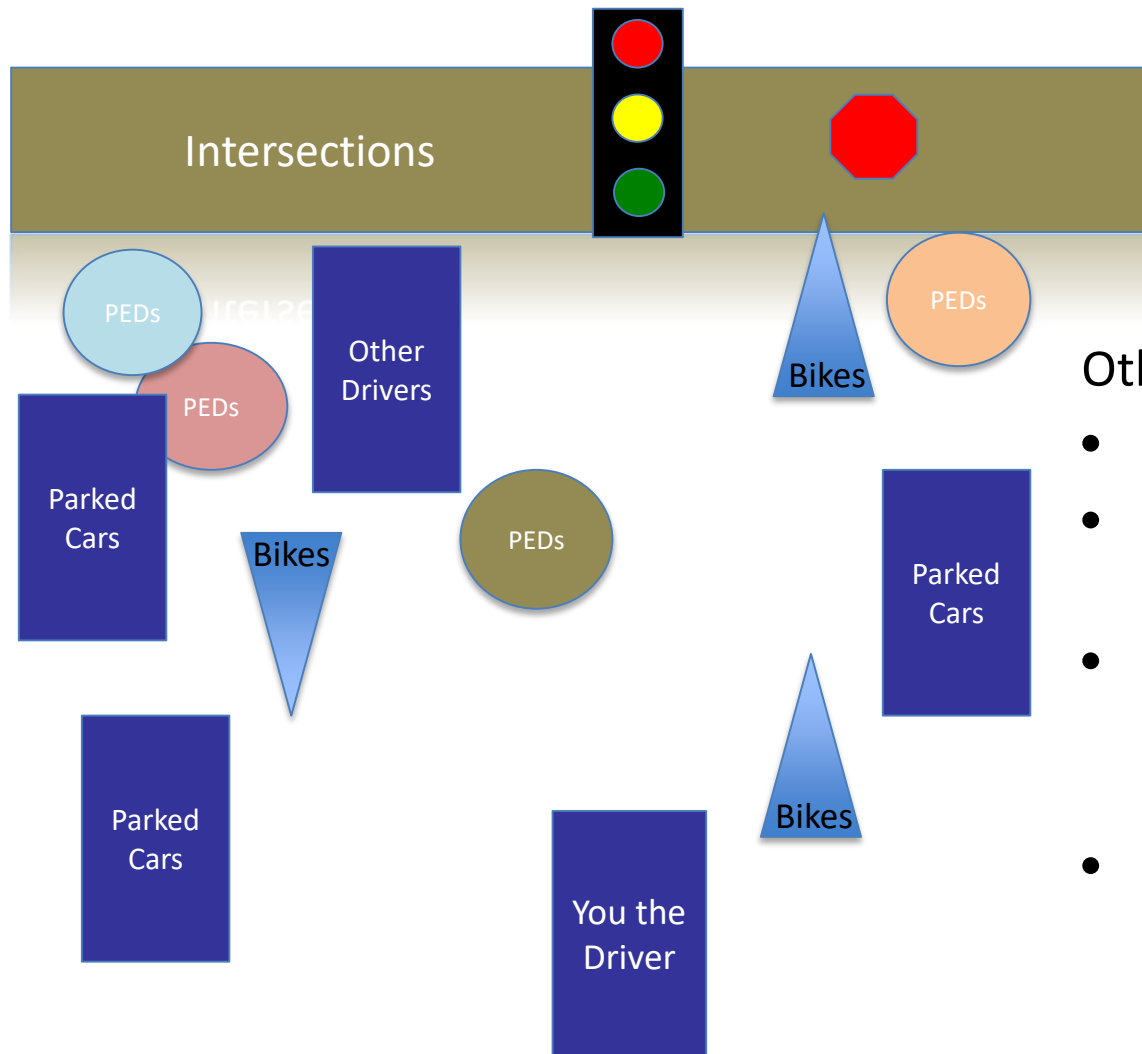
- Understand the complex nature of urban driving.
- Use the Zone Control System to see and manage intersections.
- Review who must yield at intersections.
- Understand the types of traffic control devices at intersections.
- Understand how to time traffic lights.
- Put the pieces together to drive in the urban environment.



What are Urban Environments?

- They are complex
- Full of risks
- Many different types of HTS users
- Many different traffic control devices
- Variable speeds
- Different lane configurations
- Heavier traffic
- More conflicts
- Require good searching strategies
- Actions planned in advance
- Good speed management
- Knowing how and when to yield to others
- Cooperation with other users

Complexities of Urban Driving



Other complexities

- Variable speeds
- One-way and two-way streets
- Marked and unmarked intersections
- Other?



Scan the scene. What do you see?

Finding Intersections



Remember These?

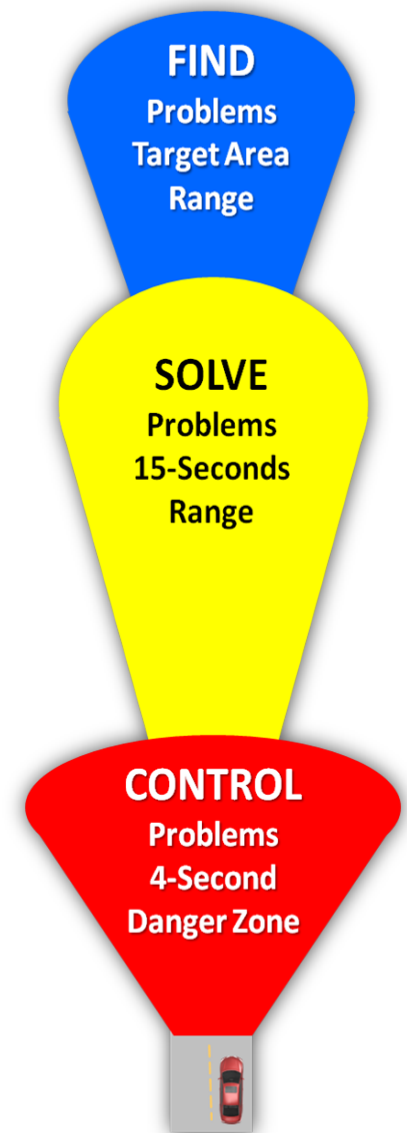
Find Intersections - Target Area Range

Solve & Control - 15-Second Range

Path-of-travel and/or line-of-sight problems
Get the best speed, position, and communication

Control - 4-Second Danger Zone

Reevaluate with 45° or 90° searches to control problems
Be prepared to adjust speed, position, and communication before you occupy that space



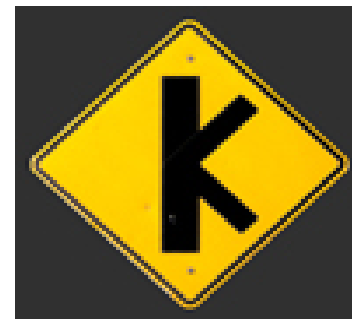
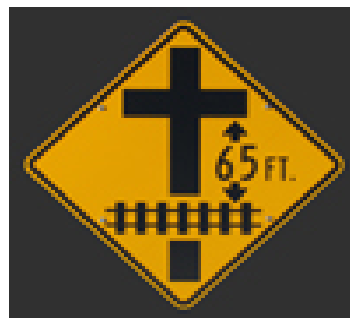


What's an Intersection?

That place where two or more roads intersect

- Can be any shape.
- Usually controlled: Traffic signs and/or signals present on one or more sides.
- Sometimes uncontrolled: No traffic signs or signals present on any side.

Intersection Shapes



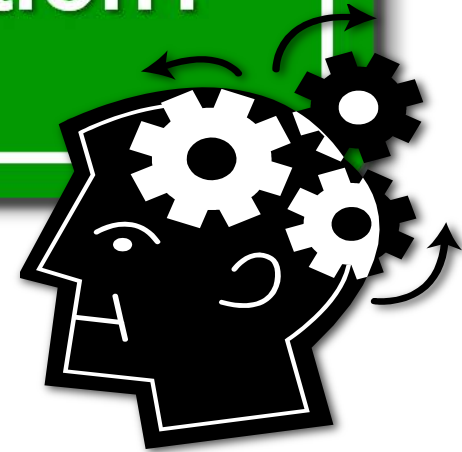


Brainstorm



What are some clues that will help you see that you are approaching an intersection?

Intersection Clues



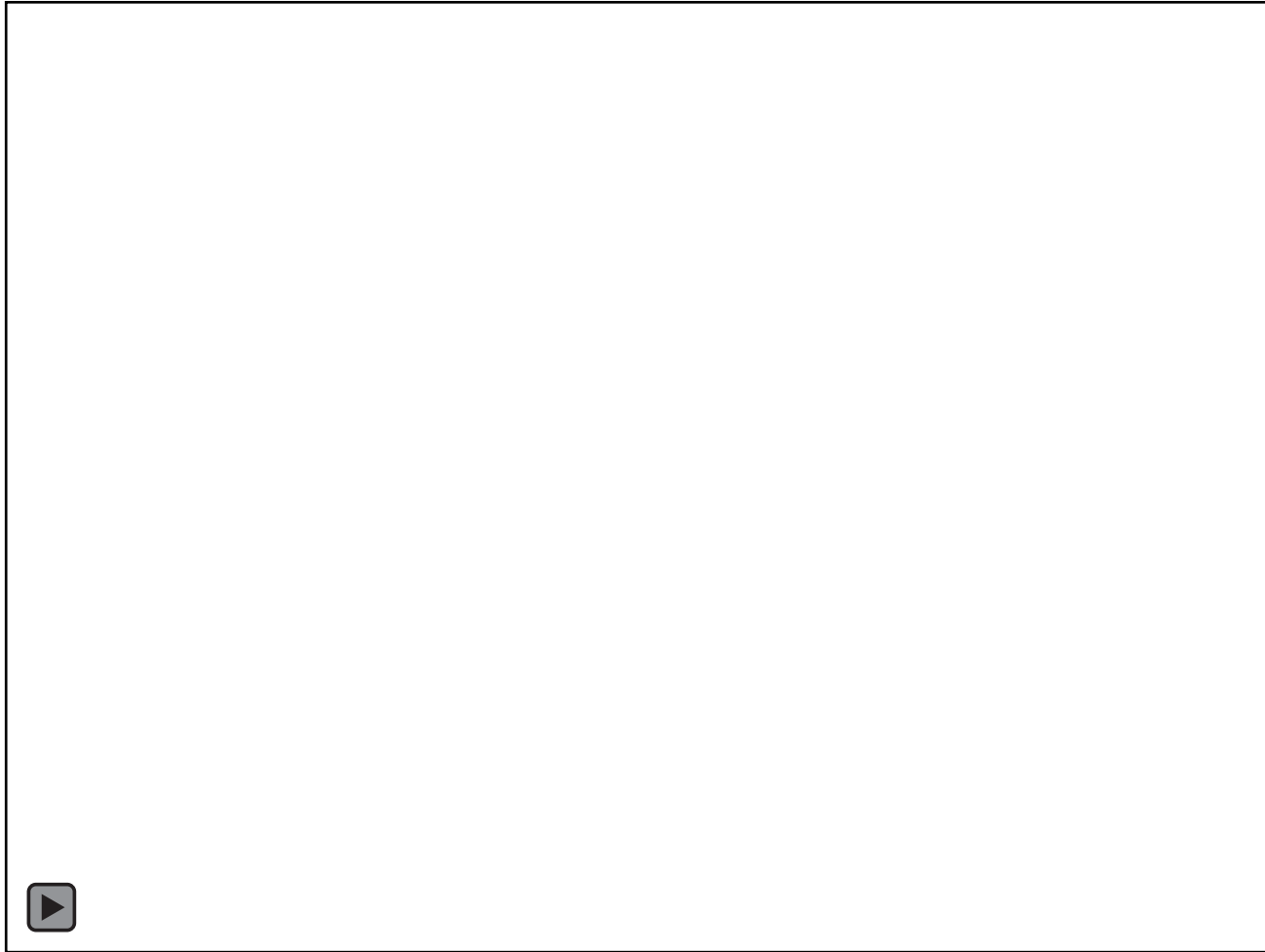


Your turn to find clues ...

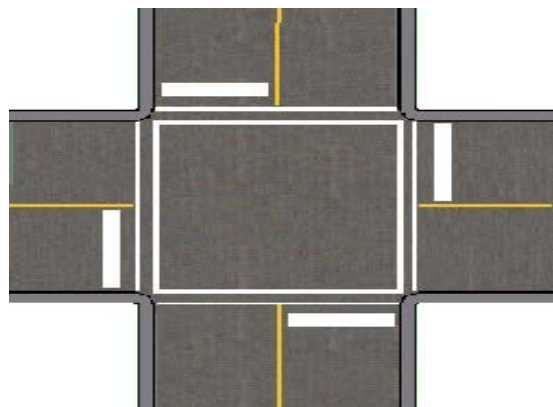
While watching the video clip on the next slide, identify the clues you see that help you find intersections.



Identify Intersection Clues



Which clues are easy to see in the target area?



Road Markings

- Arrows
- Crosswalks, Stop lines
- Break in center line

Cross Traffic



Which might be more visible in the 15-second range or 4-second danger zone?

Where are the intersections located? What are the clues?



Where are the intersections located? What are your clues?



Where are the intersections located?



Where are the intersections located?



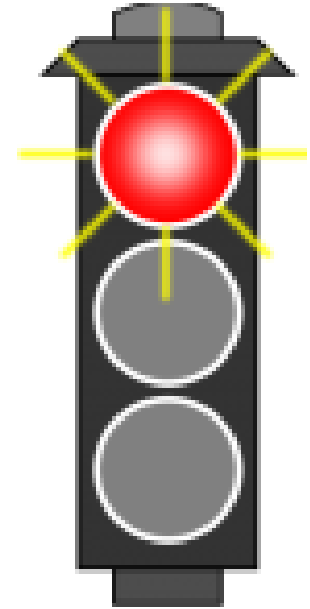
Intersection Controls



Controlled intersections have lights and/or signs that assign yielding responsibilities.



Uncontrolled intersections have no lights or signs. The rules of the road assign yielding responsibilities.




Time for you to take control!



Who Must Yield?

- Remember that laws are written in terms of who must yield—not who has the right of way.
- Remember that even though someone may have to yield to you, they may not follow the law.



Look at the vehicles approaching the intersection below. Who must yield?



When approaching a 4-way uncontrolled intersection, who should yield? Why?



Look at the vehicles approaching the intersection below. Who must yield?



When turning left, who should yield? Why?

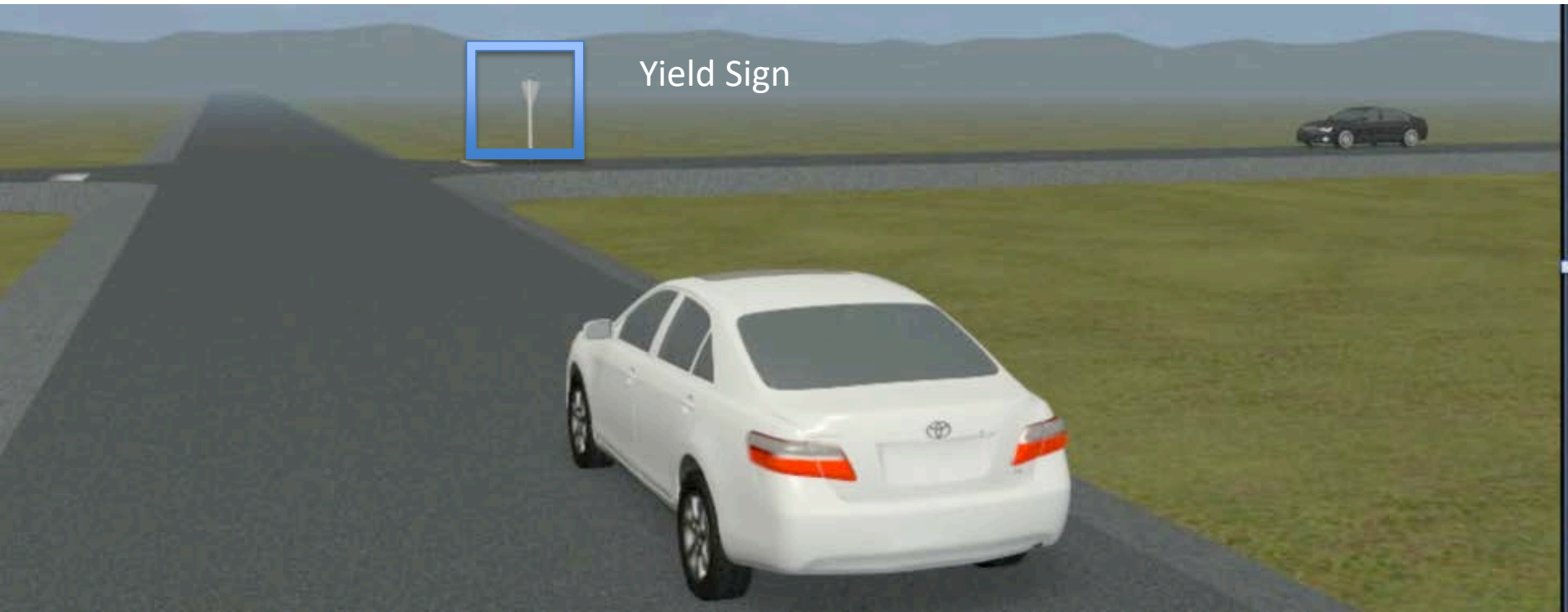
Look at the vehicles approaching the intersection below. Who must yield?



At a 4-way stop, who should yield? Why?



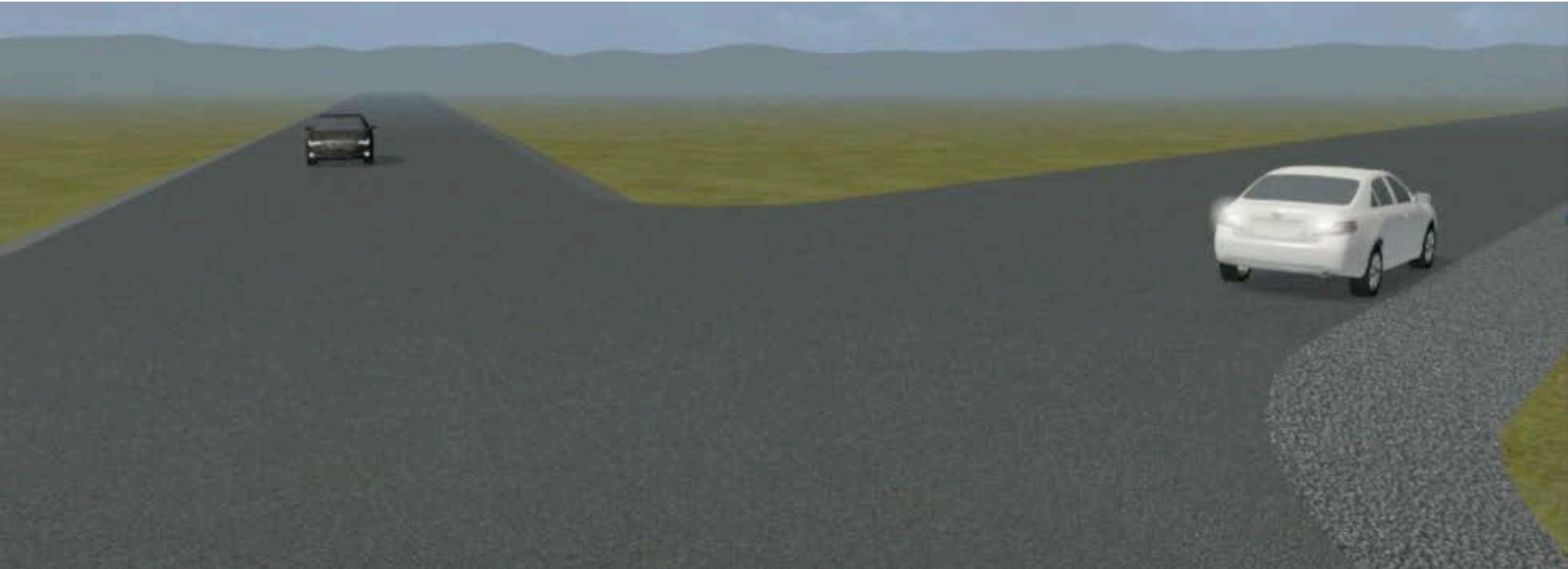
Look at the vehicles approaching the intersection below. Who must yield?



Who should yield? Why?



Look at the vehicles approaching the intersection below. Who must yield?



Who should yield? Why?



Look at the vehicles approaching the intersection below. Who must yield?



Leaving a driveway or alleyway, who should yield? Why?



Your Turn

- Scan the scene
- Describe what you see
- What are you required to do?
- Where must you yield?

Where should you search and what should you do about your speed?



Why is there a flashing light?



You are in the middle lane.
What must you do at this intersection?





You are driving the white car.
What must you do at this intersection?





You are at the stop sign.
What must you do at this intersection?



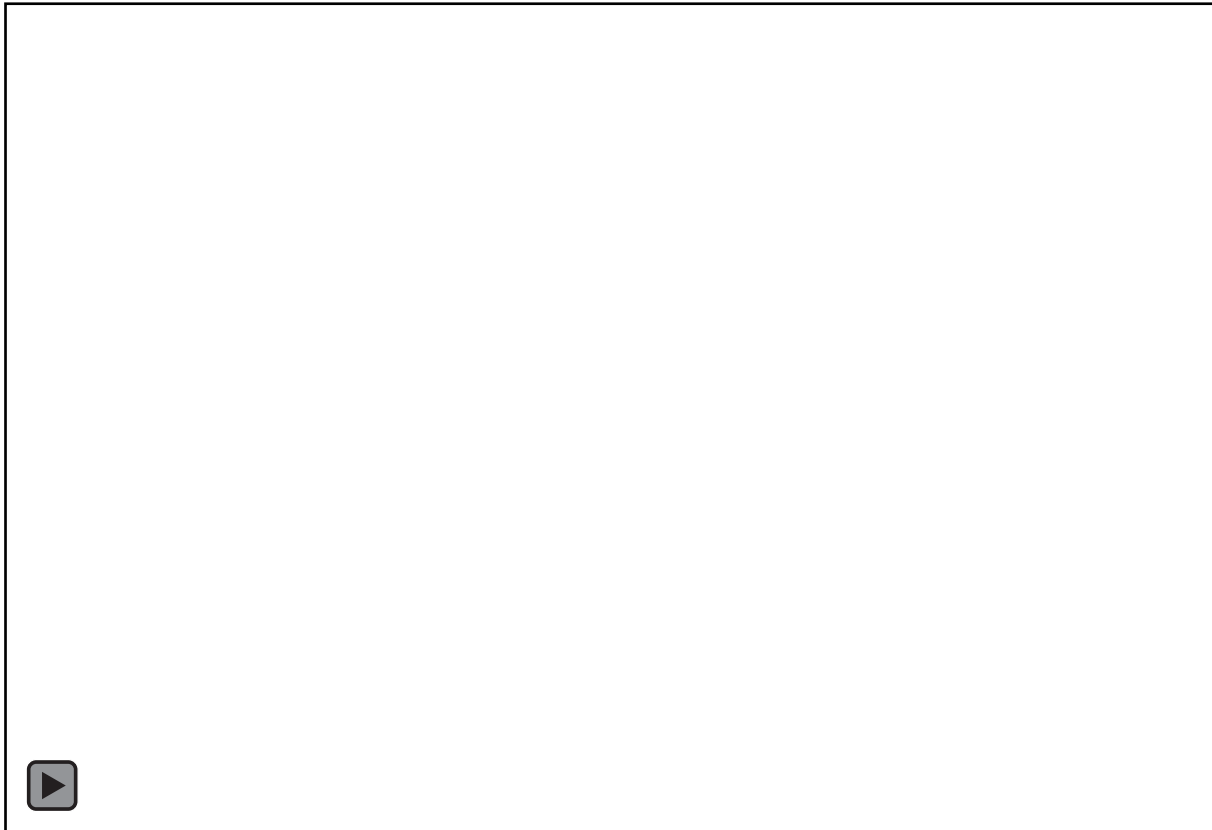
What must you do at this intersection?



You are approaching this intersection from the right. Describe what you can and can't do here.



Delayed Start on Green



1. What color is the light for the approaching white pickup?
2. What should the drivers on the left do to avoid a collision with the white truck?
3. What other HTS users are at risk in the intersection?

Play Video (0:7)



You intend to turn right at the upcoming intersection.
What will you do to legally turn at the light?



How many lanes are going in your direction?
You intend to turn left at the signal.
What must you do and is it safe to do so?

What can you do instead?

You are about to enter Moccasin, MT. What do you need to do to safely go through this rural town?





150

3.75

Downtown Helena
←

12 WEST
Missoula
→

J&J Tire Center
TIRE FACTORY
TRUCKLOAD TIRE SALE
REBATES UP TO \$240
ON 4 TIRES SEE
STORE FOR DETAILS




DRIVE THRU

EXXON
3.15

Student Activity: Timing Traffic Lights

Take out your a and b cards



You will need them for the next activity



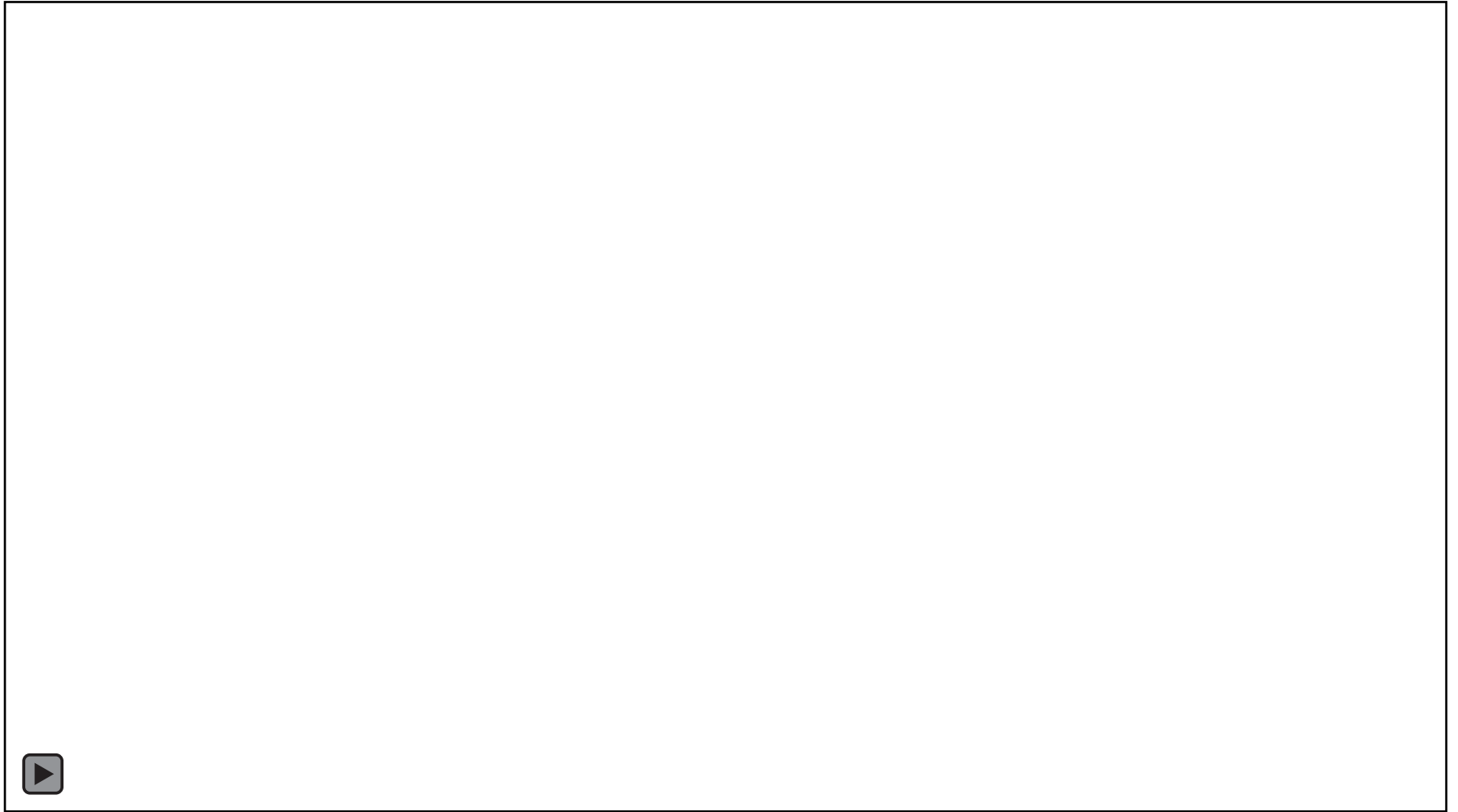
Click here: [02_M04%20Timing%20Traffic%20Lights.pdf](#)



PUTTING THE PIECES TOGETHER



Complexities of Urban Driving



PLAY VIDEO (3:10)

Urban environments are complex for many reasons. What are the complexities here and how should you drive this street?







Urban Environments Review

- They are complex
- Full of risks
- Many different types of HTS users
- Many different traffic control devices
- Variable speeds
- Different lane configurations
- Heavier traffic
- More conflicts
- Require good searching strategies
- Actions planned in advance
- Good speed management
- Knowing how and when to yield to others
- Cooperation with other users



Montana Driver Education and Training Standards and Benchmarks

1. Laws and Highway System

- 1.1. know the laws outlined in the Montana Driver's manual;
- 1.2. understand the laws outlined in the Montana Driver's Manual; and
- 1.3. consistently demonstrate knowledge and understanding by responsible adherence to highway transportation system traffic laws and control devices.

2. Responsibility

- 2.1. recognize the importance of making safe and responsible decisions for owning and operating a motor vehicle;
- 2.2. demonstrate the ability to make appropriate decisions while operating a motor vehicle;
- 2.3. consistently display respect for other users of the highway transportation system; and
- 2.4. develop positive habits and attitudes for responsible driving.

3. Visual Skills

- 3.1. know proper visual skills for operating a motor vehicle;
- 3.2. communicate and explain proper visual skills for operating a motor vehicle;
- 3.3. demonstrate the use of proper visual skills for operating a motor vehicle; and
- 3.4. develop habits and attitudes with regard to proper visual skills.

4. Vehicle Control

- 4.1. demonstrate smooth, safe and efficient operation of a motor vehicle; and
- 4.2. develop positive habits and attitudes relative to safe, efficient and smooth vehicle operation.

5. Communication

- 5.1. consistently communicate driving intentions (i.e., use of lights, vehicle position, and personal signals);
- 5.2. adjust driver behavior based on observation of the highway transportation system and other roadway users;
- 5.3. adjust communication (i.e., use of lights, vehicle position, and personal signals) based on observation of the highway transportation system and other users; and
- 5.4. develop positive habits and attitudes for effective communication.

6. Risk Management

- 6.1. understand driver risk-management principles;
- 6.2. demonstrate driver risk-management strategies; and
- 6.3. develop positive habits and attitudes for effective driver risk-management.

7. Lifelong Learning

- 7.1. identify and use a range of learning strategies required to acquire or retain knowledge, positive driving habits, and driving skills for lifelong learning;
- 7.2. establish learning goals that are based on an understanding of one's own current and future learning needs; and
- 7.3. demonstrate knowledge and ability to make informed decisions required for positive driving habits, effective performance, and adaptation to change.

8. Driving Experience

- 8.1. acquire at least the minimum number of BTW hours over at least the minimum number of days, as required by law, with a Montana-approved driver education teacher; and
- 8.2. acquire additional behind-the-wheel driving experience with a parent or guardian's assistance in a variety of driving situations (i.e., night, adverse weather, gravel road, etc.).